



# MONTHLY MEMBERSHIP PROGRESS REPORT

Results as of: 4/30/2016

Multiple District 18

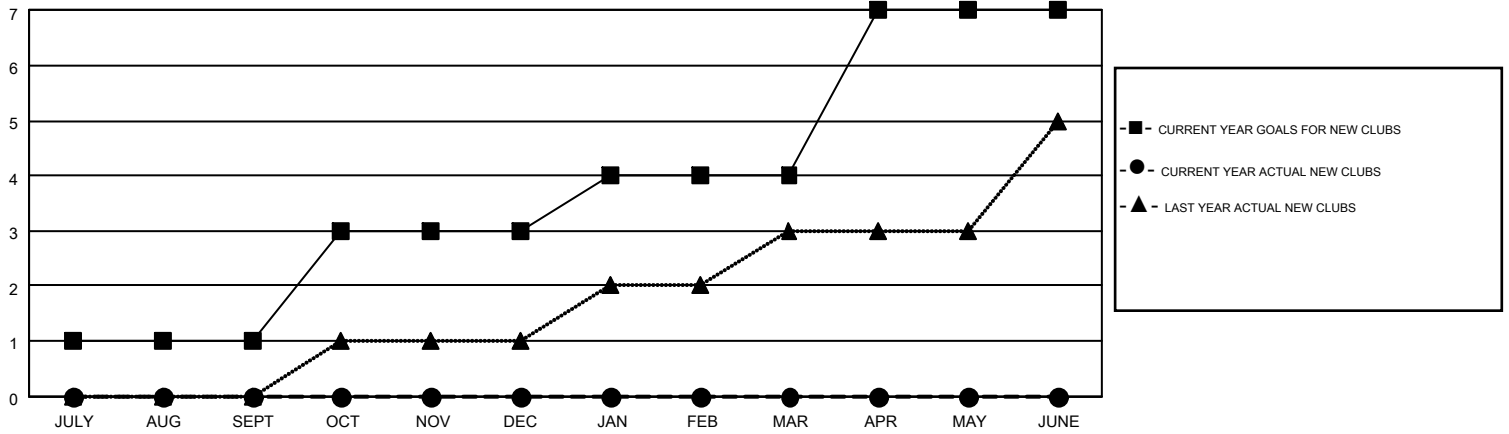
LOCATION: GEORGIA

GMT: HARVEY WHITLEY

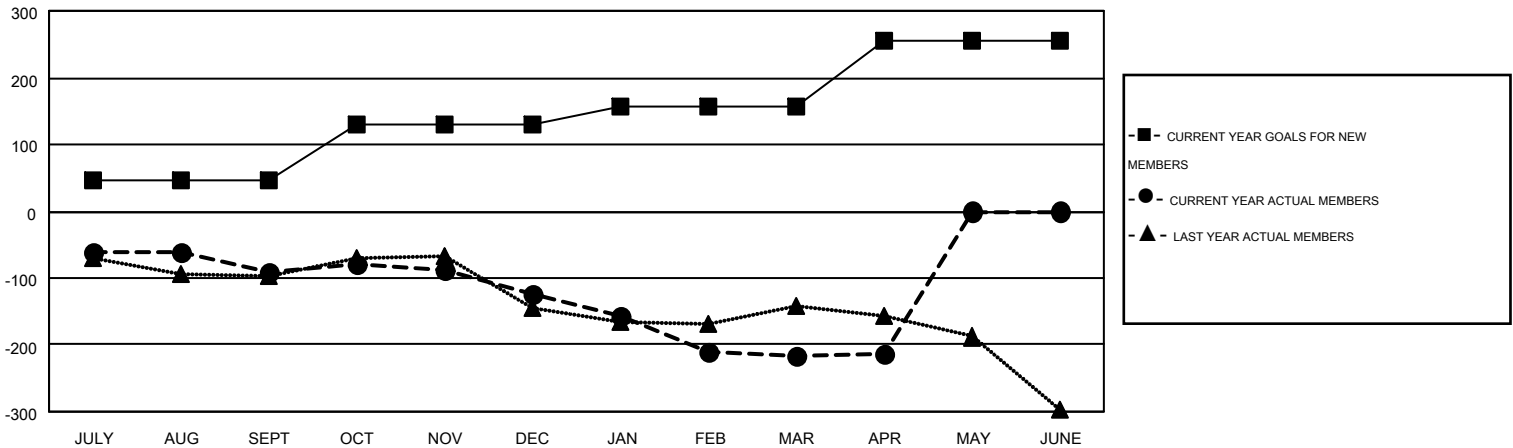
GMT CA 1

| Clubs                 |               |           |               |               | Members               |                 |                               |                 |               |
|-----------------------|---------------|-----------|---------------|---------------|-----------------------|-----------------|-------------------------------|-----------------|---------------|
| RESULTS FOR 2015-2016 |               |           |               |               | RESULTS FOR 2015-2016 |                 |                               |                 |               |
| QUARTER               | NEW CLUB GOAL | NEW CLUBS | DROPPED CLUBS | NET GAIN/LOSS | QUARTER               | NEW MEMBER GOAL | CHARTER AND NEW MEMBERS ADDED | DROPPED MEMBERS | NET GAIN/LOSS |
| JULY/AUG/SEPT         | 1             | 0         | 1             | -1            | JULY/AUG/SEPT         | 47              | 136                           | 226             | -90           |
| OCT/NOV/DEC           | 2             | 0         | 4             | -4            | OCT/NOV/DEC           | 84              | 123                           | 158             | -35           |
| JAN/FEB/MAR           | 1             | 0         | 1             | -1            | JAN/FEB/MAR           | 26              | 121                           | 212             | -91           |
| APR/MAY/JUNE          | 3             | 0         | 0             | 0             | APR/MAY/JUNE          | 99              | 39                            | 36              | 3             |

GOALS AND ACTUAL NEW CLUBS CUMULATIVE



GOALS AND ACTUAL MEMBERS CUMULATIVE



|                        |  |   |                |
|------------------------|--|---|----------------|
| DROPPED CLUBS: 6       | 138 CLUBS OF 230 ADDED 1 OR MORE NEW MEMBERS | <u>GENDER DISTRIBUTION</u>                            |                |
| <u>DROPPED MEMBERS</u> |  | MALE  | 3,686 (68.39%) |
| DECEASED               | 81   | FEMALE  | 1,704 (31.61%) |
| CLUB CANCELLED         | 36   | <a href="#">CLICK HERE FOR HEALTH ASSESSMENT DATA</a> |                |
| OTHER                  | 515  | FAMILY UNIT MEMBERS                                   | 1,010          |
| TOTAL                  | 632  | HEAD OF HOUSEHOLD                                     | 492            |
|                        |  | NON-HEAD OF HOUSEHOLD                                 | 518            |